



INTRODUCING TO:

**RINNOVO**

At The Grove.

Take Advantage  
of the Transformation

SALES:



*Casabella*  
REALTY AND MANAGEMENT  
PH:786-360-3521



145 Madeira Ave, Suite#310  
Coral Gables, Florida 33134



+1 (786)-360-3521 / +1 (305)-456-0238.  
FAX: +1(786)-452-0560



[www.thebecgroupservices.com](http://www.thebecgroupservices.com)  
[info@thebecgroupservices.com](mailto:info@thebecgroupservices.com)

**01** Index / About us  
THE BEC GROUP SERVICES, INC

**02** Our Team

**03** Firenze Model  
3773 Frow Ave, Miami Fl 33133  
3790 Oak Ave, Miami Fl 33133

**05** Toscana Model  
3621 Florida Ave, Miami Fl 33133  
3655 Florida Ave, Miami Fl 33133

**08** Venice Model  
112 Florida Ave, Miami Fl 33133  
3648 Oak Ave, Miami Fl 33133

**11** Sicilian Model  
3480 Day Ave, Miami Fl 33133

**13** Milano Model  
3624 Charles Ave, Miami Fl 33133

**15** Verona Model  
3561 Charles Ave, Miami Fl 33133

## ABOUT US

The Bec Group, Services, Inc. has been building in Florida since 1974. We have built over 5 million in residential, commercial, and industrial projects for private investors, institutional investors, and government entities. Through the years we have built thousands of multifamily residential units for clients such as The Related Companies and Terremark as well as High-Rise condominiums, office buildings, industrial warehouse projects, and schools for the Dade County School Board. Our construction expertise spans conventional construction techniques, metal frame, tilt up, and EFIS. We have built in the most adverse conditions of coastal beach front with extensive dewatering requirements and foundations. We have a highly experienced staff of project managers and superintendents to assist in consistently bringing in our projects both on time and under budget. For The Bec Group, Services, Inc. service and quality is paramount. We pride ourselves on high quality finishes and an excellent safety record for our jobs. The BEC philosophy is to be the client ally and work towards their goals. We work with our clients from the inception of design by value engineering a project to conform to their needs with turnkey lump sum agreements or fee based construction management services. Please review a partial list of completed and ongoing projects and see why we are an excellent fit for your development needs. For a full list of projects, please contact us and we can deliver it.



**RINNOVO**  
COCONUT GROVE

01

VISIT US:  
[www.thebecgroupservices.com](http://www.thebecgroupservices.com)

# OUR TEAM

We are proud to call this great city our home. THE BEC GROUP SERVICES INC, manages and finances South Florida's finest mixed-use developments.

In addition, THE BEC GROUP SERVICES INC, assists clients in seeking real estate properties for development or investments as well as providing real estate services and title insurance for those same properties. Our skills and experience are enhanced by a passion for quality and entrepreneurial spirit. BEC properties are more than structures- they are a union of energy, creativity, forward thinking and collaboration.

For a condensed list of several fully completed projects by **THE BEC GROUP SERVICES INC**, please go to our contact page  
For more information on the BEC Group Services, Inc., contact us at: Via phone (786) 360 3521,  
(305) 456 0238.

Visit us at : [www.thebecgroupservices.com](http://www.thebecgroupservices.com)



**Francisco A. Espinosa Jr.**  
C.E.O

[becconstruction@live.com](mailto:becconstruction@live.com)



**Oscar Moreno R.**  
C.O.O

[morenorey@hotmail.com](mailto:morenorey@hotmail.com)

# RINNOVO

## COCONUT GROVE

# 02



# FIRENZE MODEL

PROPERTY: 3773 FROW AVE.

PROPERTY: 3790 OAK AVE.

## MODERN ARCHITECTURE AND FINISHES

3 BEDROOMS 2 BATH

PLUS GARAGE

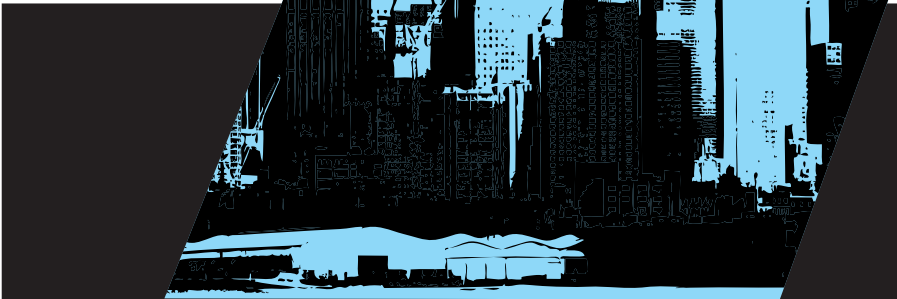
Peace Of Mind, Safety, Security & Comfort For Your Family, Energy Efficient - Enhanced Windstorm And Impact Resistance.

Fortified-poured Re-enforced Concrete Construction Storm Shutters - Reduced Outside Noise Pollution.

**ENERGY STAR CERTIFIED** - Energy Efficient Design, Lighting, Ceiling Fans & Appliances

Sleek Modern Design - Family Room - Living Room - Dining Room- Wood Cabinets - Tile Floor.

Great Value: Design Saves You Thousands Of Dollar Every Years On Homeowners Insurance, Utilities & Maintenance Costs.



# RINNOVO

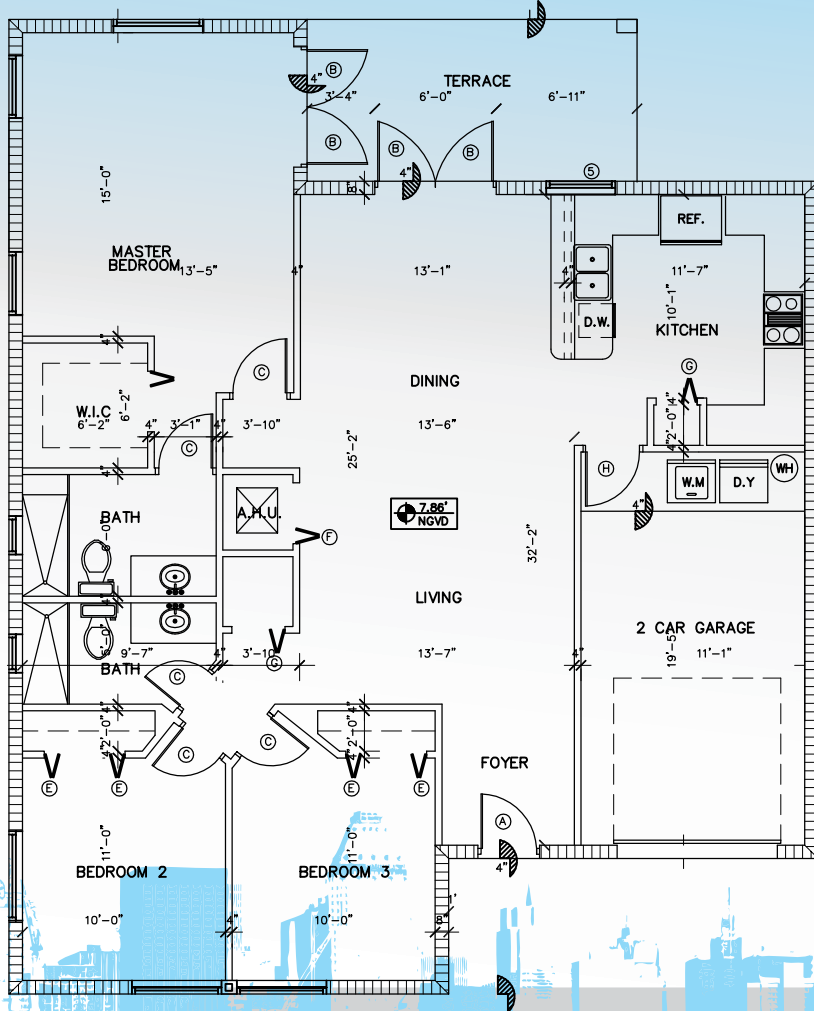
COCONUT GROVE



# 03

PROPERTY: 3773 FROW AVE.

PROPERTY: 3790 OAK AVE.



Modern Architecture  
And Finished.  
3 Bedrooms / 2 Bath  
1 Car Garage  
Large Living Area  
Lot Area: 5,000 SQ FT  
Total SQ FT Area  
: 1,800 SQ FT

FLOOR PLAN  
FIRENZE  
MODEL

04



PROPERTY: 3621 FLORIDA AVE.

PROPERTY: 3655 FLORIDA AVE.



# TOSCANA MODEL

**MODERN ARCHITECTURE  
AND FINISHES**

4 BEDROOMS 2 BATH

PLUS GARAGE



**RINNOVO**  
COCONUT GROVE



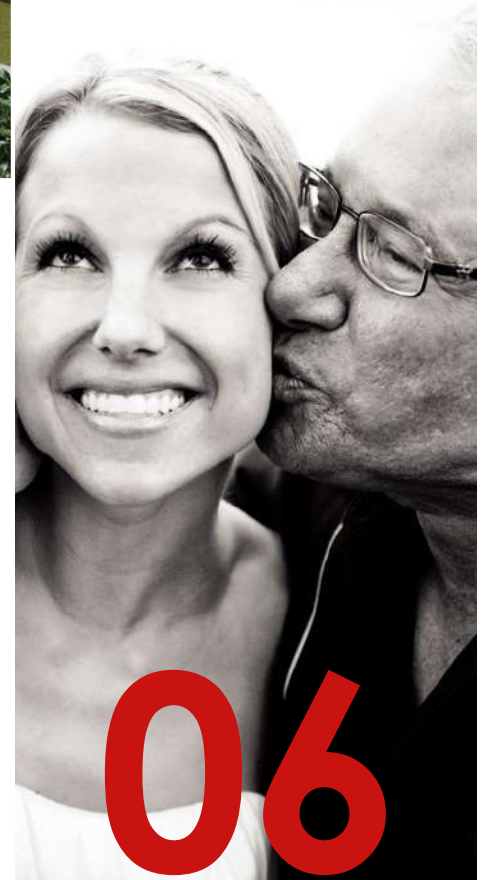
**05**



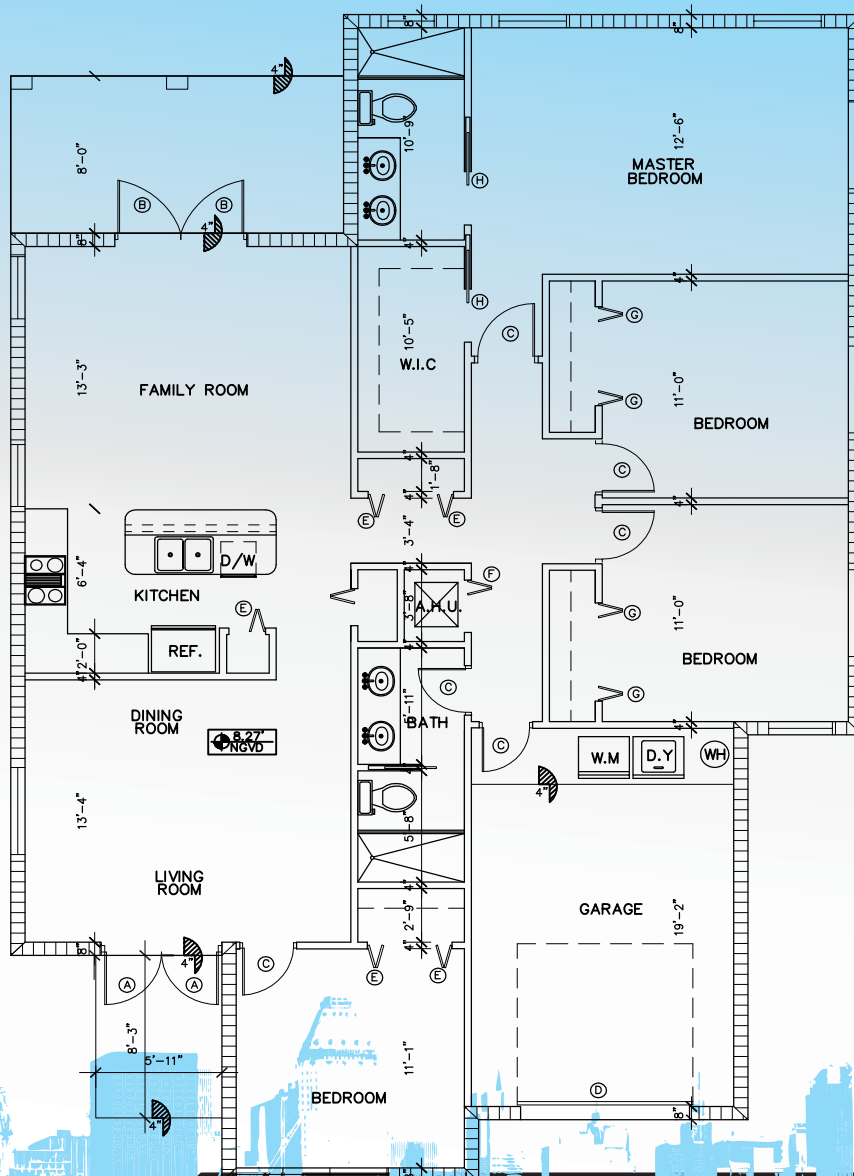
# TOSCANA MODEL

PROPERTY: 3621 FLORIDA AVE.

PROPERTY: 3655 FLORIDA AVE.



06



PROPERTY: 3621 FLORIDA AVE.

PROPERTY: 3655 FLORIDA AVE.

Modern Architecture  
And Finished.  
4 Bedrooms / 2 Bath  
1 Car Garage  
Large Living Area  
Lot Area: 5,000 SQ FT  
Total SQ FT Area  
: 2,000 SQ FT

FLOOR PLAN  
TOSCANA  
MODEL



07





# VENICE MODEL

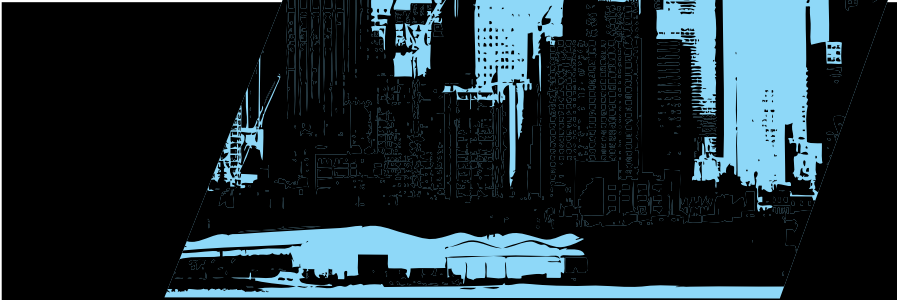
PROPERTY: 112 FLORIDA AVE

PROPERTY: 3648 OAK AVE

## MODERN ARCHITECTURE AND FINISHES

3 BEDROOMS 3 BATH  
PLUS GARAGE

Peace Of Mind, Safety, Security & Comfort For Your Family,  
Energy Efficient - Enhanced Windstorm And Impact Resistance.  
Fortified-poured Re-enforced Concrete Construction  
Storm Shutters - Reduced Outside Noise Pollution.  
**ENERGY STAR CERTIFIED** - Energy Efficient Design, Lighting,  
Ceiling Fans & Appliances  
Sleek Modern Design - Family Room - Living Room - Dining Room-  
Wood Cabinets - Tile Floor.  
Great Value: Design Saves You Thousands Of Dollar Every  
Years On Homeowners Insurance, Utilities & Maintenance  
Costs.



# RINNOVO

COCONUT GROVE

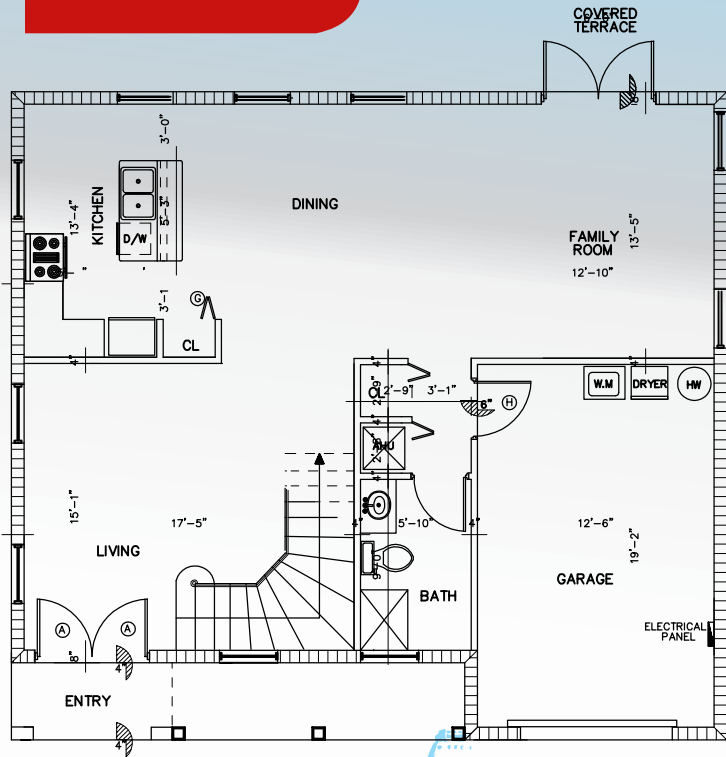
# 08



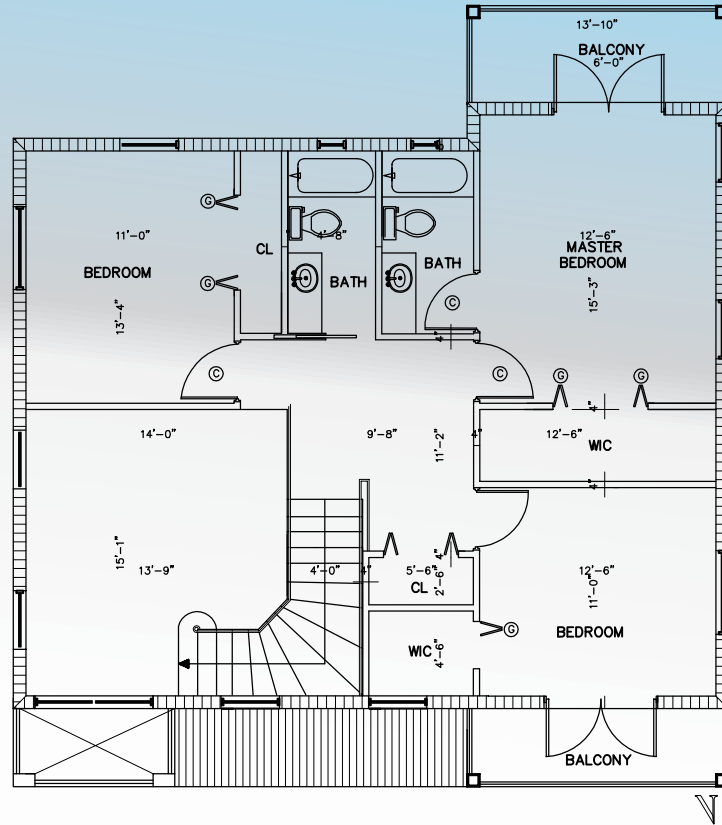
Modern Architecture  
 And Finishes.  
 3 Bedrooms / 3 Bath  
**TOTAL SQ FT AREA:  
 2,500 SQ FT**

PROPERTY: 112 FLORIDA AVE

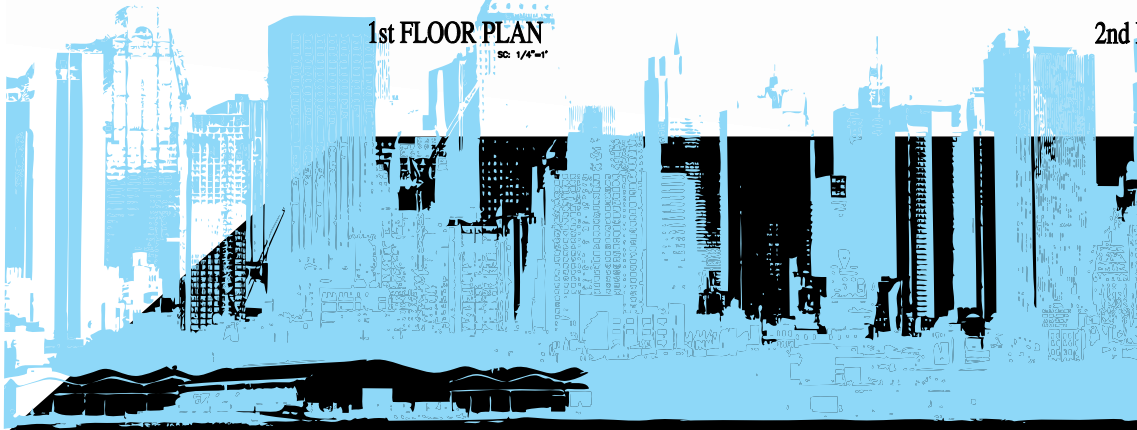
PROPERTY: 3648 OAK AVE



1st FLOOR PLAN  
 SC: 1/4"=1'

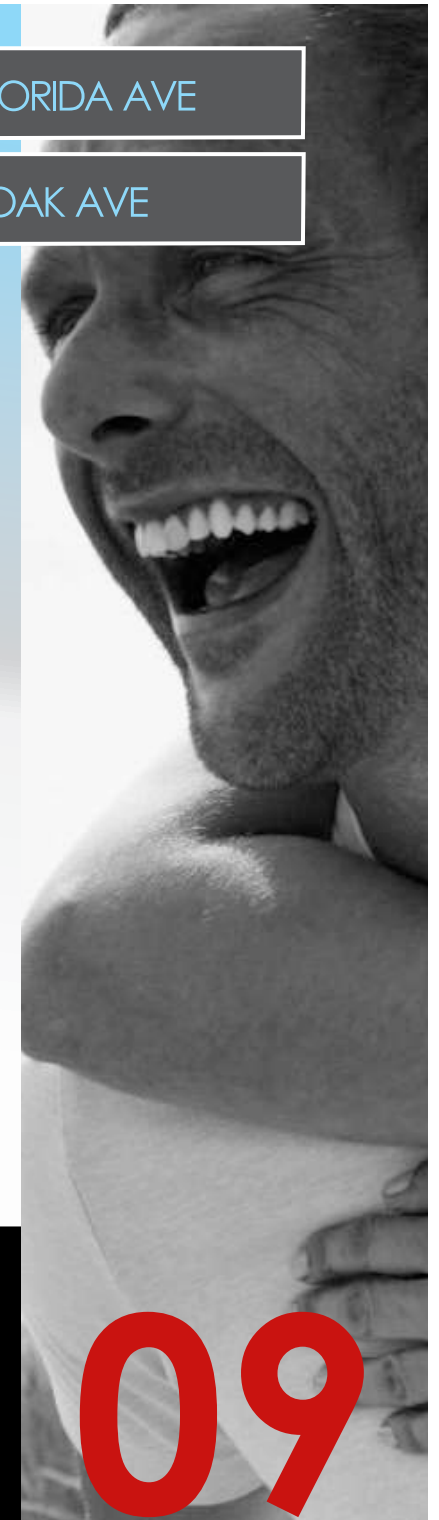


2nd FLOOR PLAN  
 SC: 1/4"=1'



**FLOOR PLAN**  
**VENICE**  
**MODEL**

**09**



**SOLD**

PROPERTY: 3480 DAY AVE

# SICILIAN MODEL

## MODERN ARCHITECTURE AND FINISHES

4 BEDROOM 3 BATH  
PLUS GARAGE

Peace Of Mind, Safety, Security & Comfort For Your Family,  
Energy Efficient - Enhanced Windstorm And Impact Resistance.

Fortified-poured Re-enforced Concrete Construction  
Storm Shutters - Reduced Outside Noise Pollution.

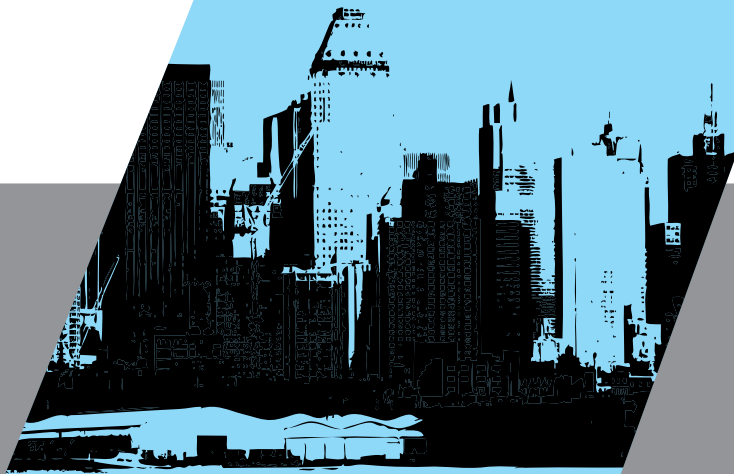
**ENERGY STAR CERTIFIED** - Energy Efficient Design, Lighting,  
Ceiling Fans & Appliances

Sleek Modern Design - Family Room - Living Room - Dining Room -  
Wood Cabinets - Tile Floor.

Great Value: Design Saves You Thousands Of Dollar Every  
Years On Homeowners Insurance, Utilities & Maintenance  
Costs.

**RINNOVO**  
COCONUT GROVE

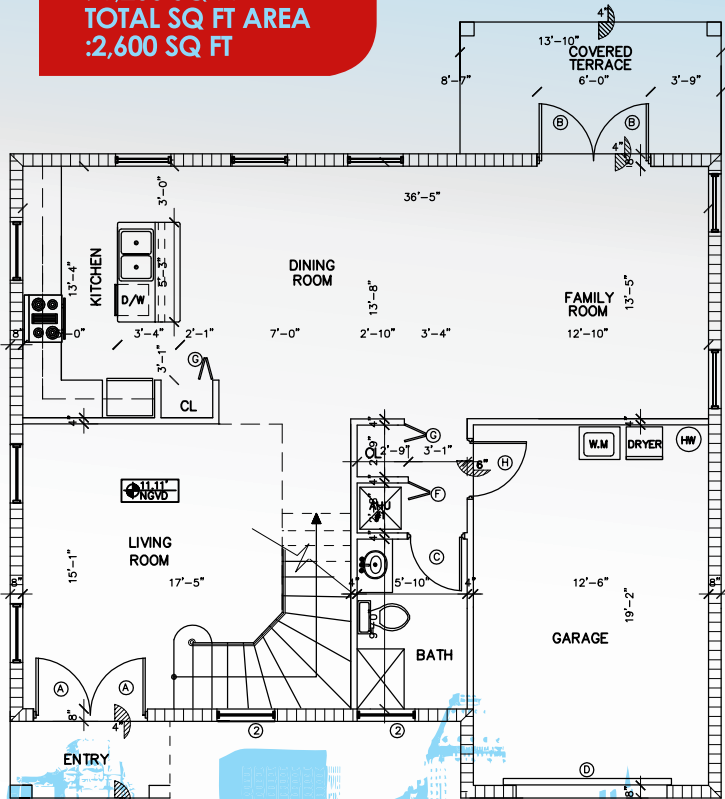
104



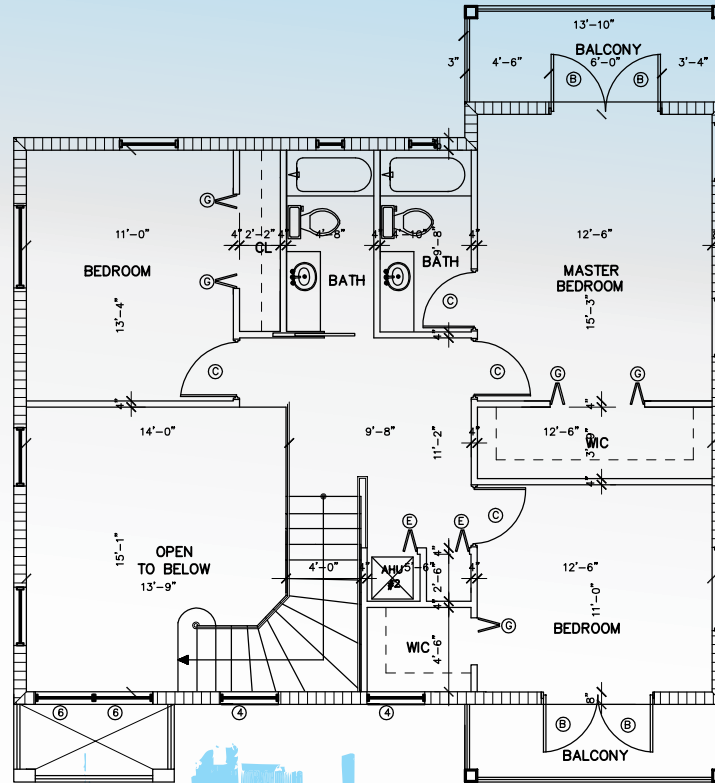
**SOLD**

PROPERTY: 3480 DAY AVE

Modern Architecture  
And Finishes.  
4 Bedrooms / 3 Bath  
Large Living Area  
Lot Area: 5,000  
Total Area **Floor 1**  
: 1,400 SQ FT  
Total Area **Floor 2**  
: 1,200 SQ FT  
**TOTAL SQ FT AREA**  
:2,600 SQ FT



1st FLOOR PLAN  
SC: 1/4"=1'



2nd FLOOR PLAN  
SC: 1/4"=1'



**FLOOR PLAN**  
**SICILIAN**  
**MODEL**



PROPERTY: 3624 CHARLES AVE.

# MILANO MODEL

**MODERN ARCHITECTURE  
AND FINISHES**

**4 BEDROOM 3 BATH  
PLUS GARAGE**

Peace Of Mind, Safety, Security & Comfort For Your Family,  
Energy Efficient - Enhanced Windstorm And Impact Resistance.

Fortified-poured Re-enforced Concrete Construction  
Storm Shutters - Reduced Outside Noise Pollution.

**ENERGY STAR CERTIFIED** - Energy Efficient Design, Lighting,  
Ceiling Fans & Appliances

Sleek Modern Design - Family Room - Living Room - Dining Room -  
Wood Cabinets - Tile Floor.

Great Value: Design Saves You Thousands Of Dollar Every  
Years On Homeowners Insurance, Utilities & Maintenance  
Costs.

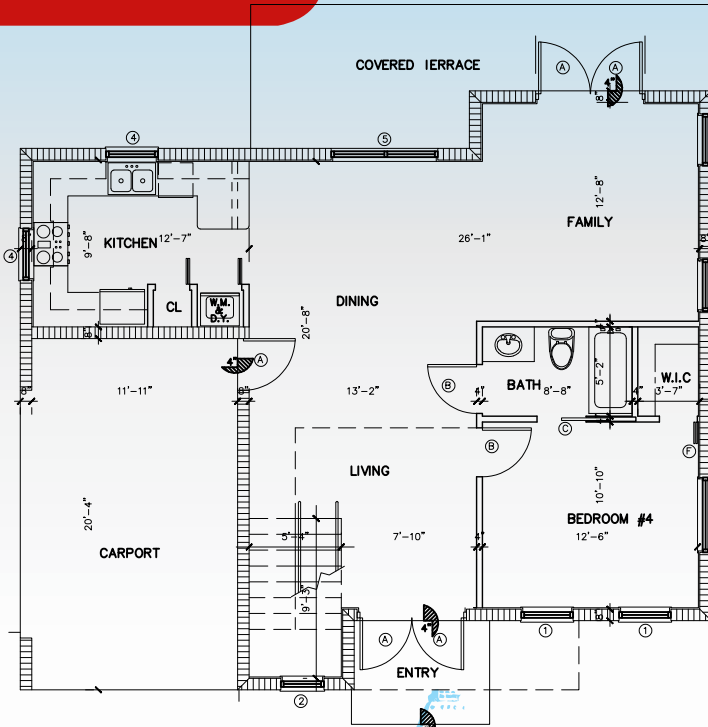
**RINNOVO**  
COCONUT GROVE

**12**

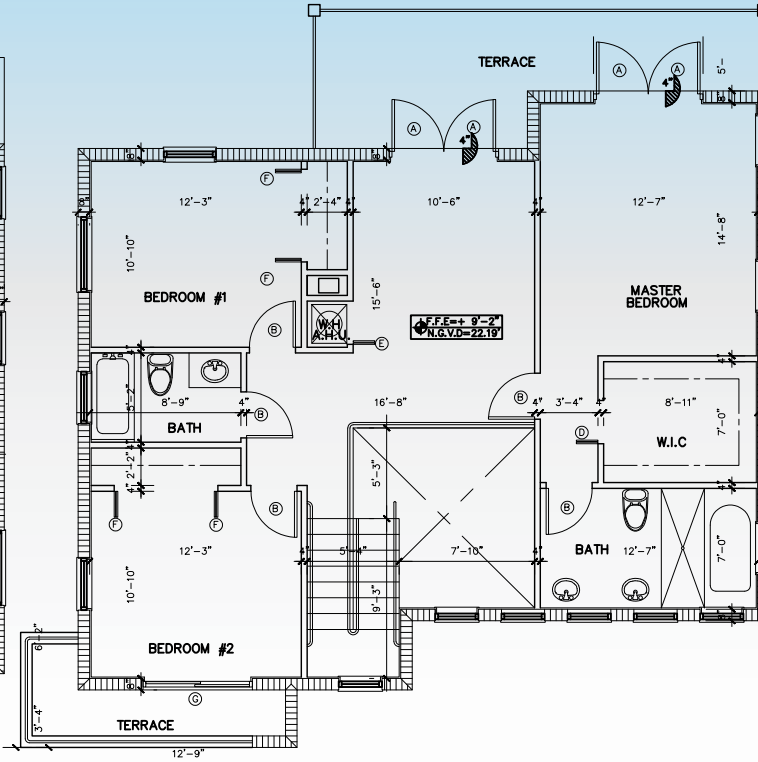


PROPERTY: 3624 CHARLES AVE

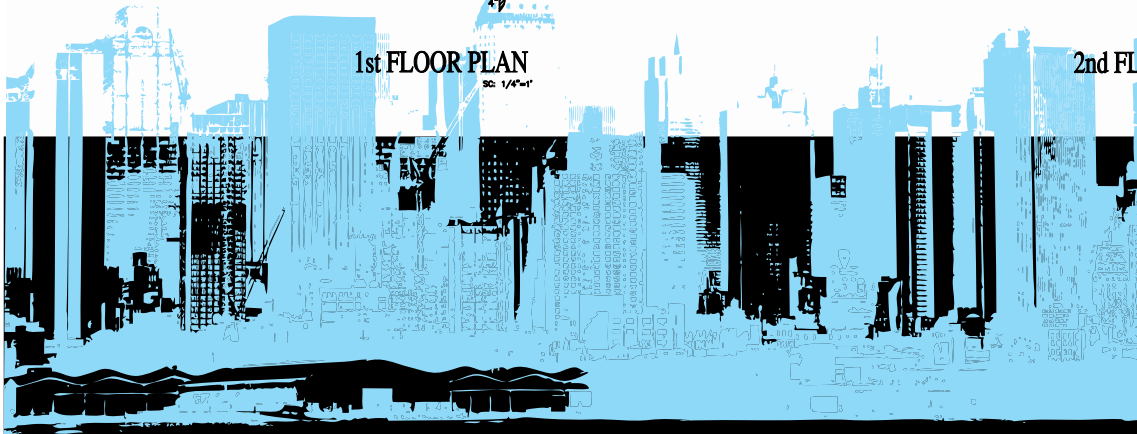
Modern Architecture  
And Finishes.  
4 Bedrooms / 3 Bath  
Large Living Area  
Lot Area: 5,000  
**TOTAL SQ FT AREA:  
2,600 SQ FT**



1st FLOOR PLAN  
SC: 1/4"=1'



2nd FLOOR PLAN  
SC: 1/4"=1'



FLOOR PLAN  
MILANO  
MODEL

13

PROPERTY: 3561 CHARLES AVE

SOLD

# VERONA MODEL

**MODERN ARCHITECTURE  
AND FINISHES**

**4 BEDROOMS 3 BATH  
PLUS GARAGE**

**RINNOVO**  
COCONUT GROVE

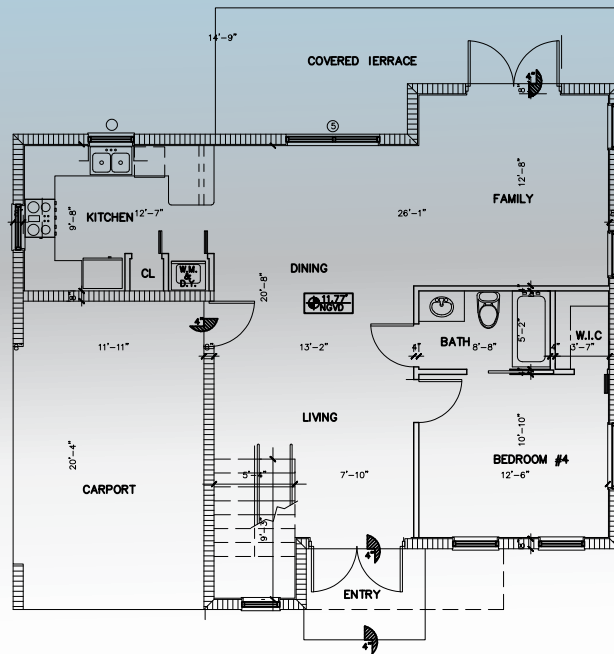
14



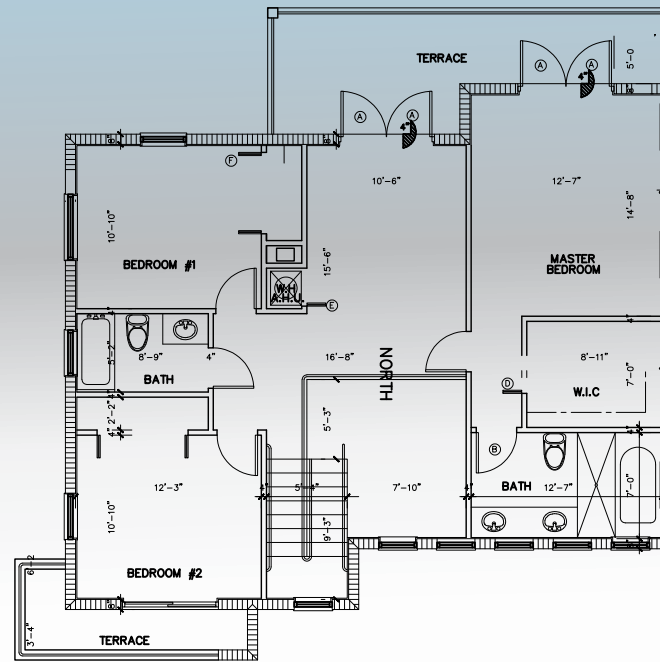
Modern Architecture  
And Finishes.  
4 Bedrooms / 3 Bath  
Large Living Area  
Lot Area: 5,000  
**Total SQ FT Area  
:2,800 SQ FT**

PROPERTY: 3651 CHARLES AVE

**SOLD**



1st FLOOR PLAN  
SCALE: 1/4"=1'



2nd FLOOR PLAN  
SCALE: 1/4"=1'



**FLOOR PLAN  
VERONA  
MODEL**

**15**

